

YOUR GRAIN HANDLING & LIVESTOCK SPECIALIST.

Flexahopper Plastics is the largest rotational molding company in the Pacific West. Since 1967, we take pride in the quality and workmanship of our products.

We are committed to world-class customer service and investment in advanced processing techniques and quality control. Through membership in many professional and trade associations, as well as extensive research and development, we are successful in taking many complex and difficult to produce products to market.

We understand the challenges that the agricultural industry faces which is why we conduct extensive industry research to provide the market with the most cutting edge results to guarantee that our products fulfill your needs.



Toll Free 1.888.328.8176
Telephone 1.403.328.8146
Fax 1.403.328.8476

Headquarters
2530 - 39 Street North Lethbridge, AB T1H 5J2

OUR COMMITMENT TO GREEN

We power our facility through our own
508 large solar panels installed on our rooftop.

CHANGE IS IN THE WIND

Our secondary source of energy comes
from wind generated electricity.



“Since 2007 Flexahopper has demonstrated a strong
commitment with the environment by using energy that
comes from wind and water sources across Canada.”



COMMITTED TO AGRICULTURE

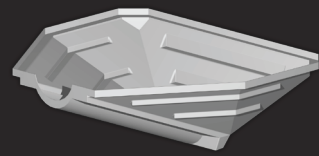
For more than 50 years, we have excelled at designing products to meet the specific needs of the Agricultural Industry. Our product lines have delivered the best farm - tested designs, materials and components to give you the top performance you can always count on. We have based our reputation on providing simple, dependable, straight forward design and labour – saving performance products by using the latest technology and energy efficient processes so that we can lead the industry and continue to be a name you can trust.



Strong and durable containers designed for your needs.

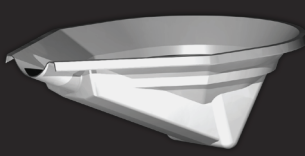
HOPPERS

- UV resistant
- Bright colors for night vision
- Design allows for easy and complete clean out
- Won't sag or droop
- Corrosion and impact resistant



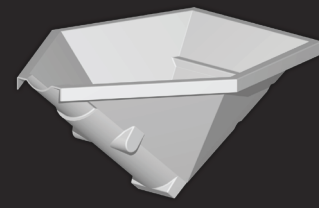
REGULAR V HOPPER 8"

8-10" Dia



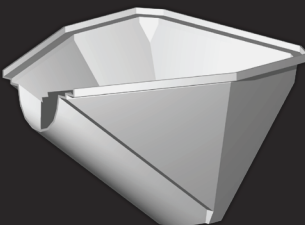
AGRI - HOPPERS

8" | 10" | 13"



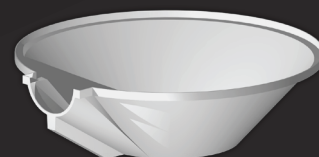
SEED HOPPER

6" | 8"



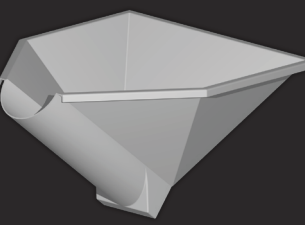
MINI HOPPER

4-6" Dia



WHOPPER

8" Dia



AIR DRILL SEED HOPPER

8" Dia

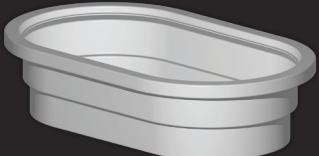
FEEDERS

- UV resistant
- Design allows for easy clean out
- High impact resistance
- Will not rust or dent



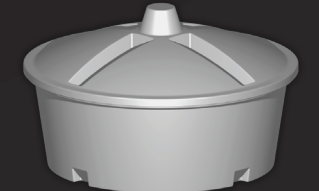
ROUND WATER TROUGHS

Model	Diameter (inches)	Imp. Gal. / Litres / US Gal.
4' Round Water Trough	4'	107 485 128
6' Round Water Trough	6'	300 1364 360
7.5' Round Water Trough	7.5'	450 2000 525



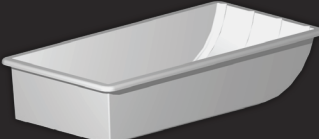
OVAL WATER TROUGHS

Model	Height x Length x Width (inches)	Imp. Gal. / Litres / US Gal.
Oval 30	12" X 49 1/4" x 29 1/4"	30 137 36
Oval 60	24 1/4" x 53 1/2" x 28"	60 318 84
Oval 110	24 1/4" x 79 1/2" x 28"	110 500 132



2 & 4 WHEEL LICK TROUGHS

Model	Diameter (inches)	Imp. Gal. / Litres / US Gal.
2 Wheel Lick Trough	47 1/2"	100 455 120
4 Wheel Lick Trough	70 1/2"	230 1046 276



CALF SLEDS

Small - Yellow	38" x 4 1/2" x 20"
Medium - Orange	49 1/2" x 6 1/2" x 24 1/4"
Deep - Blue	48 1/4" x 10 1/8" x 24 1/4"



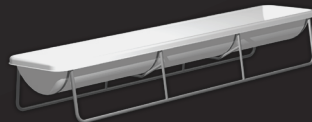
FENCE LINE FEEDER

13 1/4" H x 25 1/4" L x 17 1/4"



CALF WARMER

51" L x 27 1/2" W x 45" H



BUNK FEEDER

11 1/4" H x 136 1/4" L x 27 1/4" 95 Imp. Gal., 432 Litres, 114 US Gal.

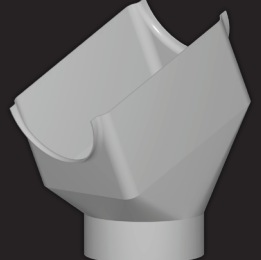
DOWNSPOUTS

- Won't damage your equipment
- Directs grain without blowing around in the wind
- Corrosion and impact resistant with smooth edges that will not dent or rust
- Hard wearing adjustable web harness
- Different styles that fit all kind of grain augers



SPOUT ADAPTORS

6" | 8" | 10" | 12" | 13"



ANGLED DOWNSPOUT TOP

8" | 10"



OVAL DOWNSPOUTS

6-8" | 10"



NO SNAG DOWNSPOUT

10" | 13" | 16"



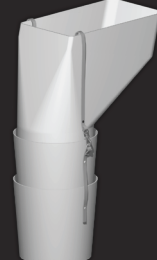
STEP BUCKET DOWNSPOUT

8" | 10"



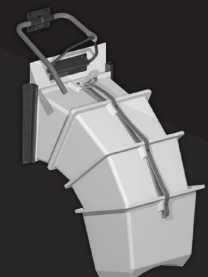
ROUND DOWNSPOUT

6" | 10" | 13" | 16"



COMBINE DOWNSPOUT

13" | 16"



NO SPILL SPOUT

24" Dia *Measurement in inches indicates the width of end gate door.